

CASE STUDY

Turboexpander Design

Turboexpander-Compressor

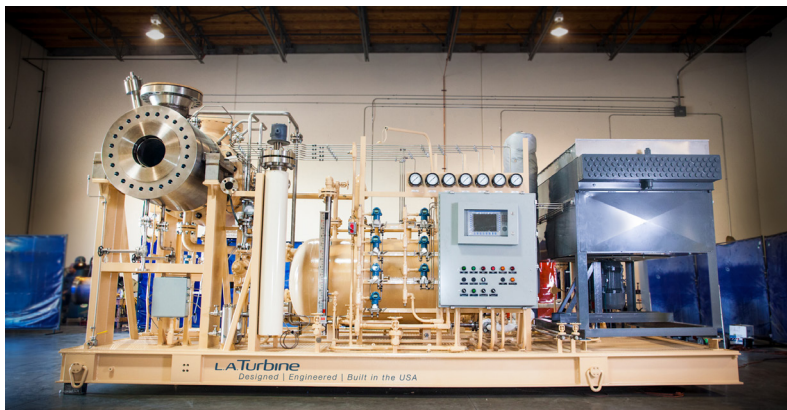
L.A. Turbine designed this L4000 turboexpander-compressor for use in ethane recovery at a 300 MMSCFD gas plant in the U.S. The unit features a single-stage expander-compressor with oil bearing and a local control panel.

Your On-Call Turboexpander Experts

Contact us today for
turboexpander design,
repair or 24/7/365
support services.

24/7/365
+1 855 FX-TURBO

© 2021 L.A. Turbine Corporation. All rights reserved.
Printed in the USA. 1020_050521



Specifications	
Application	Ethane Recovery
Frame Size	L4000
Speed	17,500 RPM
Flow Rate	150-200 MMSCFD
Inlet Pressure/Temperature	865 PSIA/-27°F
Outlet Pressure/Temperature	295 PSIA/-102°F
Wheel Power	3300-4660 hp


Rethinking Turboexpanders

www.LATurbine.com

L.A. Turbine designs and manufactures application-specific, highly engineered turboexpanders used in hydrocarbon processing, geothermal power generation and other industrial power recovery or refrigeration applications.

The company is also a recognized leader in aftermarket repair, redesign, maintenance and production of spare parts for all brands and configurations of turboexpanders worldwide.

A global field service team provides diagnostics, maintenance and emergency support 24/7/365.

24/7/365
Support Services

+1 855 FX-TURBO
(+1 855 398 8726)
service@LATurbine.com



L.A. Turbine: Your On-Call Turboexpander Experts

Turboexpanders

Turboexpander configurations include expander-compressor, expander-generator, expander-dyno (oil brake) and expander-compressors with active magnetic bearing units. Turboexpanders range from 3kW to 14MW, are capable of handling up to 3,000 PSIG pressure, can operate at speeds up to 105,000 RPM, and accommodate temperatures between -195°C to 260°C.

Ability to Deliver

From concept to commissioning, L.A. Turbine controls and manages the entire design, engineering manufacturing, assembly and testing process for all new and aftermarket equipment. As a result, we are able to deliver faster-to-market customized solutions than competitive firms, and our equipment not only meets but often exceeds clients' output performance requirements. All engineering design and development processes comply with ISO 9001:2008.

Global Presence

L.A. Turbine has established a global presence on five continents, in 16 world offices and partner locations. U.S. headquarters and manufacturing is located in Valencia, California, with sales and service facilities in California, Texas and Belgium. U.S. operations also support the needs of Canada, South America, Asia and Australia. European headquarters in Belgium serve Europe, the Middle East and Africa.

L.A. Turbine Headquarters

28557 Industry Drive
Valencia, CA 91355 USA
T: +1 661 294 8290
sales@LATurbine.com

Europe | Middle East | Africa Sales & Service Center

Rue des Semailles 22/5
4400 Flémalle BELGIUM
T: +32 4 247 30 11
saleseurope@LATurbine.com


Rethinking Turboexpanders
www.LATurbine.com