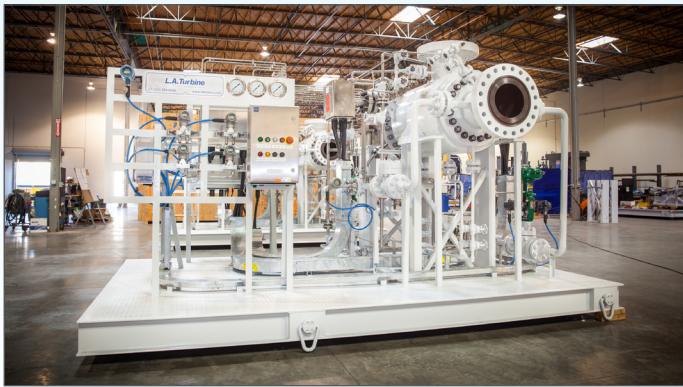


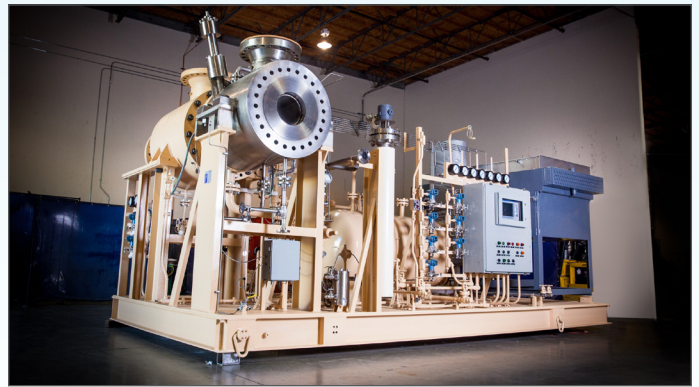
# L.A. Turbine Project **ARES**

**ARES** is the **FIRST** Standard Turboexpander-Compressor for 200MMSCFD Gas Plants with Either Magnetic or Oil Bearings  
**Same Price**



## Active Magnetic Bearing

- > High Reliability & Performance
- > Fewer Operational & Maintenance Costs
- > Small & Adjustable Footprint
- > Requires No Lube Oil System



## Oil Bearing

- > Proven Reliability & Performance
- > Ongoing Operational & Maintenance Costs
- > Larger Footprint
- > Requires Oil Lube Skid, Pumps, Reservoir, Heating & Cooling System

Contact: [Sales@LATurbine.com](mailto:Sales@LATurbine.com) or an L.A. Turbine Company Representative

Location	Company	Representative	Email
Worldwide	<a href="#">L.A. Turbine</a>	<b>Troy O'Steen</b>	<a href="mailto:tosteen@LATurbine.com">tosteen@LATurbine.com</a>
Oklahoma	<a href="#">Bartlett Equipment</a>	<b>Gary Bartlett</b> <b>Jeff Bartlett</b> <b>Mike Payne</b>	<a href="mailto:gary@bartlettequipment.com">gary@bartlettequipment.com</a> <a href="mailto:jeff@bartlettequipment.com">jeff@bartlettequipment.com</a> <a href="mailto:mike@bartlettequipment.com">mike@bartlettequipment.com</a>
Texas	<a href="#">Kruger Associates</a>	<b>Rick Kruger</b> <b>Dan Morris</b> <b>Joel Gittemeier</b>	<a href="mailto:rickkruger@pdq.net">rickkruger@pdq.net</a> <a href="mailto:danmorris@pdq.net">danmorris@pdq.net</a> <a href="mailto:joelgittemeier@pdq.net">joelgittemeier@pdq.net</a>



## L.A. Turbine

28557 Industry Drive | Valencia, CA 91355 | +1 855 FX-TURBO  
[www.LATurbine.com](http://www.LATurbine.com)

The L.A. Turbine logo is a trademark of L.A. Turbine Corporation in the United States and/or other countries. All other trademarks are the property of their respective owners.

© 2017 L.A. Turbine Corporation. All rights reserved.  
Printed in the USA.